



Our Vision

All people live with a sense of purpose, a sense of belonging and a sense of wellbeing.



Our Mission

Identitywa works in partnership with individuals and families to build a community where people with disability enjoy a fulfilled life.

We support individuals to achieve their goals, whatever they may be. We offer families the support they need.



Our Values

Above all else, we make a commitment to act.

We will look for the opportunities rather than seeing the barriers.

Our approach will be objective, transparent and fair. We will always be honest and open and no matter how challenging, we will endeavour to see it through to the end.





Contact Us

P: 9474 3303
E: reception@identitywa.com.au
W: Identitywa.com.au

Identitywa

61 Fitzgerald Street,
Northbridge WA 6003

Identitywa North

Unit 5/14 Halley Road,
Balcatta WA 6021

Identitywa South

Unit 2/35 Tamara Drive,
Cockburn WA 6164



Sharing the Journey

IDENTITYWA'S STRATEGIC PLAN 2017 - 2020





Sharing the Journey is Identitywa's Strategic Plan for 2017 - 2020. This new plan will guide us over the next three years, providing a valuable reference as we continue to make a difference to the lives of the people we support and their families.

For over 40 years we have been assisting people from all faiths and backgrounds, listening and supporting them to achieve their hopes and dreams.

As one of Western Australia's leading disability support agencies, we take very seriously our responsibility to ensure we provide our staff with the resources and education they need to enable them to provide the high quality services we are committed to deliver.

Our new Strategic Plan therefore has a strong focus on professional development and utilising technology to support our staff.

It is an exciting time in Australia with the introduction of the National Insurance Disability Scheme. Never before have so many individuals living with disability had access to the support which can assist them to become full citizens in our society. We are very excited about our role in their lives and how we can make a real difference.

Marina Re
Chief Executive Officer

It's all about...

A meaningful
difference

“ *Through our commitment to act, our involvement helps deliver a better solution for the individual and their family.*”

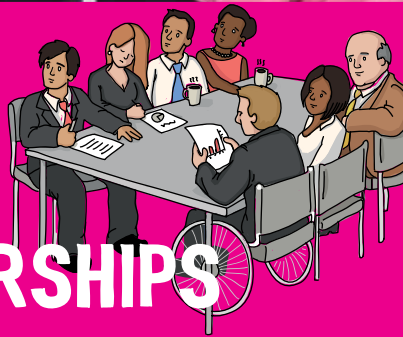
Innovative
solutions

“ *Our commitment to innovation allow us to 'raise the bar' and be aspirational.*”

Strong
transparent,
honest
partnerships

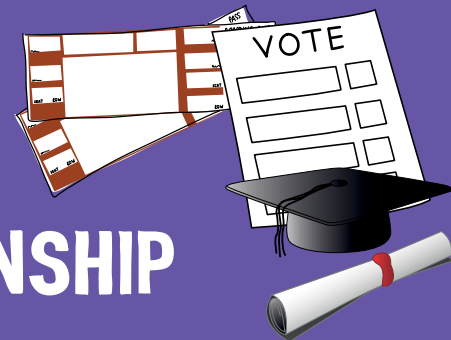
“ *We work in partnership enabling control and choice, and help develop a vision for the future.*”





STRONG PARTNERSHIPS

- Sharing the Journey with the people we support
- Increasing our reach in the community
- Further developing research collaborations with tertiary institutions and other organisations
- Working with, and supporting, other disability support agencies



FULL CITIZENSHIP

- Promoting individual citizenship
- Embedding person centred active support across all services
- Meaningful and sustained engagement
- Safeguarding Children and Vulnerable People accreditation for all staff

THINKING BIG



- Innovation to enhance outcomes
- Quality systems and approaches
- Implementing highly efficient assurance processes
- Recognising service excellence

HAVING THE RIGHT PEOPLE



- Recruiting for 'mission fit'
- Valuing a disability support career
- Solutions focussed
- Commitment to learning